

# 2021 At-A-Glance

## Nevada Hospitals by the Numbers

### 65 Members<sup>1</sup>

- Short-term acute care • Behavioral Health • Critical Access • Hospice • Rehabilitation • Federal • Long-term acute care



### Economic Impact<sup>3</sup>

2<sup>nd</sup> largest growth opportunity for Nevada's economy

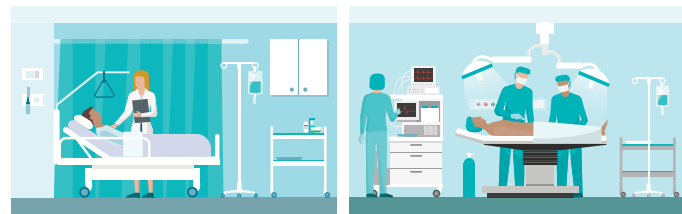
### 8,815 Beds<sup>4</sup>

- STAC/CAH: 76% • BH: 12% • LTAC: 6% • Rehab: 4% • Federal: 2% • Hospice 1%



### \$1.9 Billion<sup>2</sup>

Invested in capital expansion & improvements since 2015



### Employ 32,306<sup>5</sup>

Directly employed/contracted full-time health care professionals



### Community Support<sup>6</sup>

\$970 Million in community benefit & subsidized care



### Services

- 24/7 Emergency Care
- General & Specialty Surgery
- Psychiatric Care
- Specialty Care
- Lab & Radiology Services

### 24/7 Access to Care<sup>5</sup>

- 366,987 hospital admissions
- 1,905,116 inpatient days
- 1,144,622 ER visits
- 34,692 babies delivered



Nevada Hospital Association

Rev. 3/21

1. Nevada DHHS, DPBH, Hospital License, 2020. 2. Nevada Annual Hospital Report, 2015 – 2019, <https://www.nevadacomparecare.net/nv-reports.php>. Ninety-five percent of earnings were invested. 3. Nevada Governor's Office Economic Development, Emsi Q1 2020 Data Set. 4. Nevada DHHS, DPBH, Hospital License, 2020. 5. Nevada Compare Care, <https://www.nevadacomparecare.net/static-standard-reports.php>. Static Reports for 2019. 6. Nevada Annual Hospital Report, 2019, <https://www.nevadacomparecare.net/nv-reports.php>.