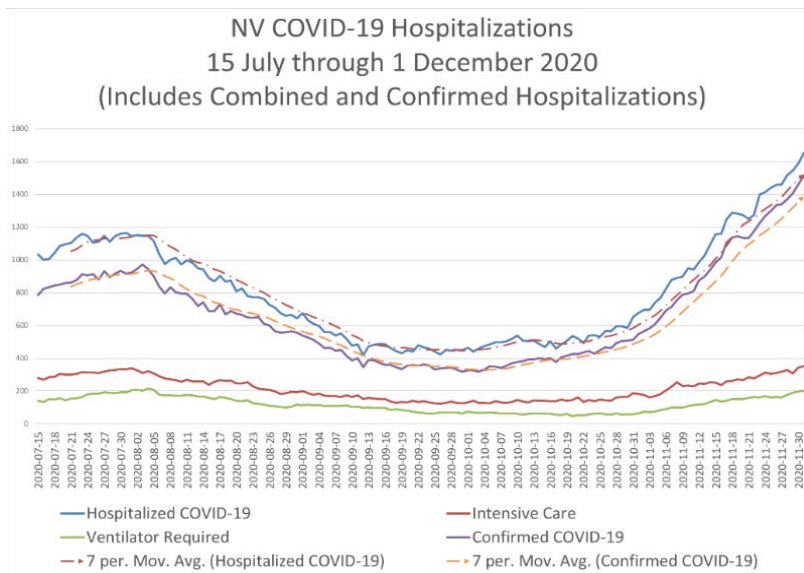
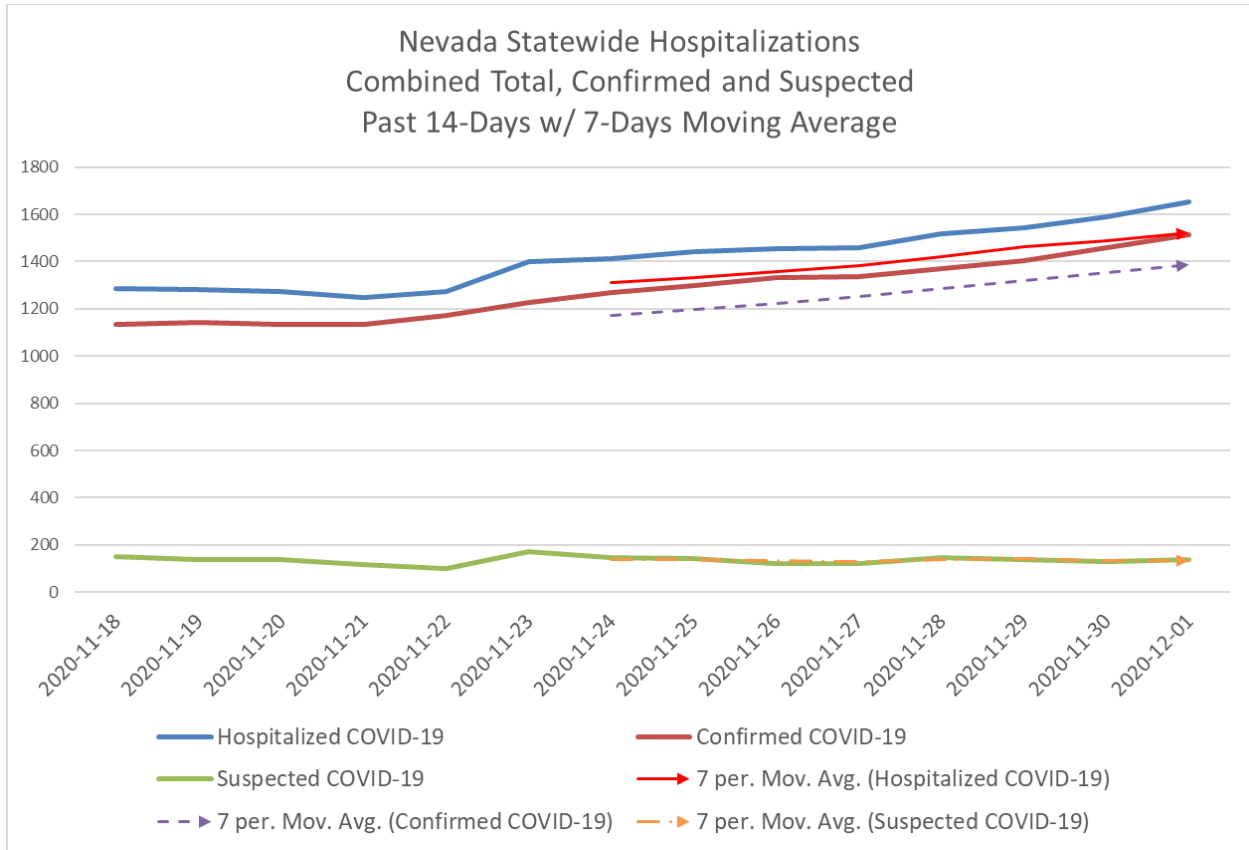


1 December 2020 Statewide Data Set



Nevada's COVID-19 hospitalizations have been steadily increasing since approximately September 12 when the confirmed case count was 345 through December 1 when the confirmed COVID-19 count stands at 1,513.

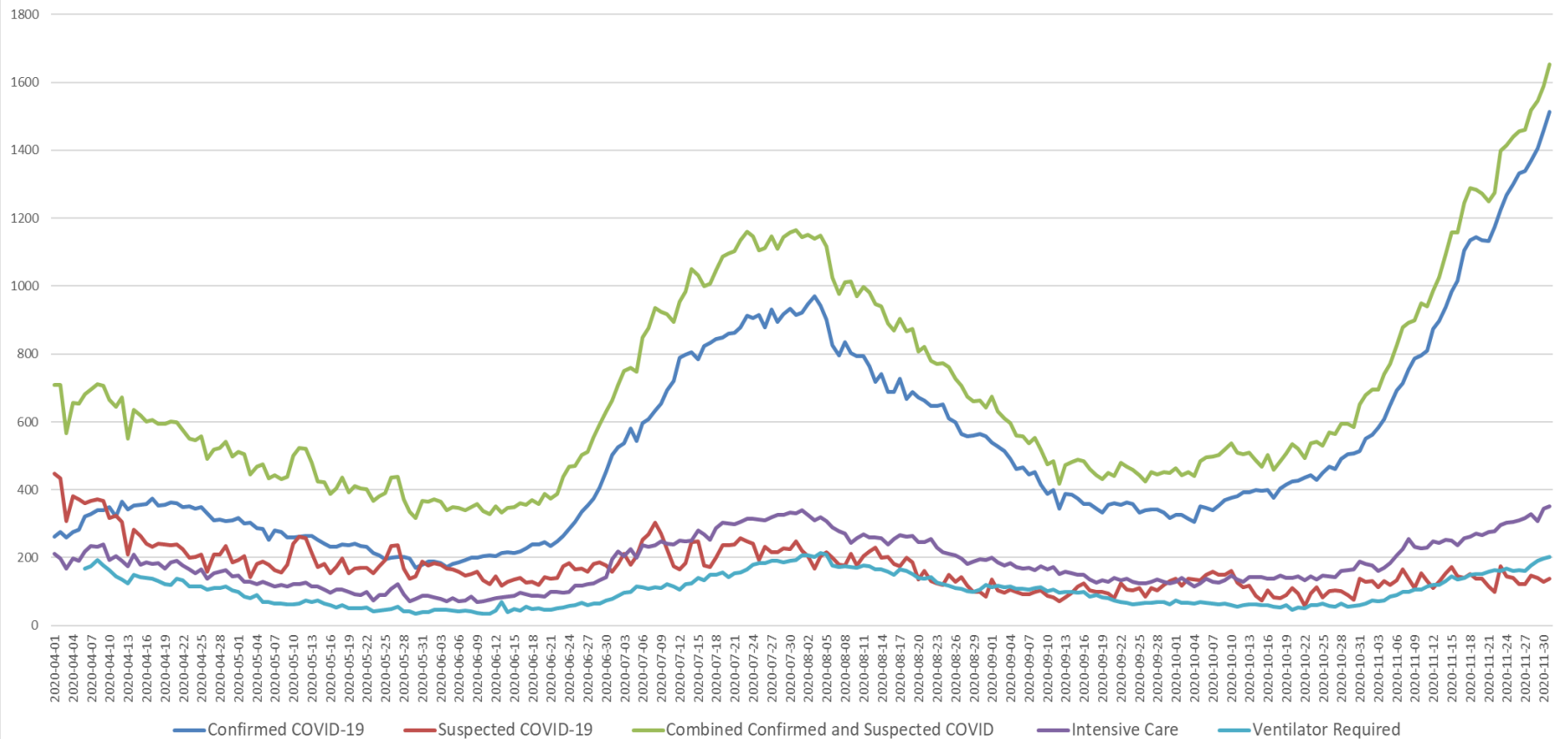
These increases have also translated into an increased burden being placed on hospitals with 9% of all admitted patients having confirmed COVID-19 (12 Sept) to now 30% having COVID-19 over the same time period.

Intensive care utilization was at 25% (percentage of patients in ICUs with confirmed or suspected COVID) to 49% on Dec. 1, 2020. Ventilator utilization has remained relatively stable during this time period with 10-20% of the ventilator inventory in use by COVID-19 patients at any one time.

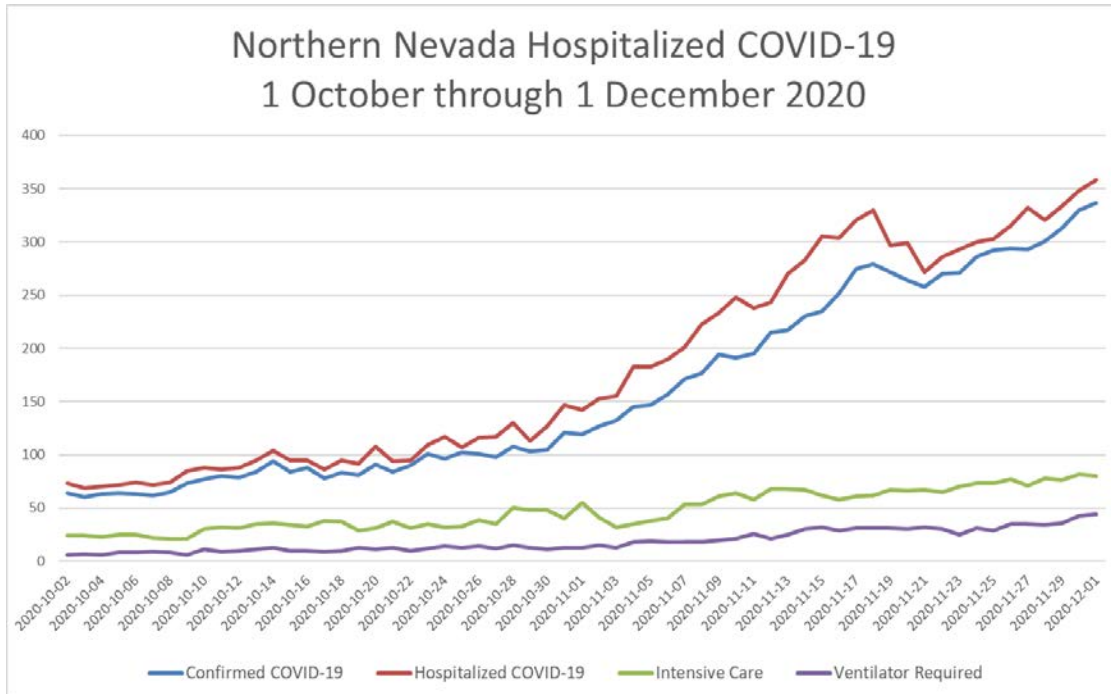


COVID-19 Daily Statistics

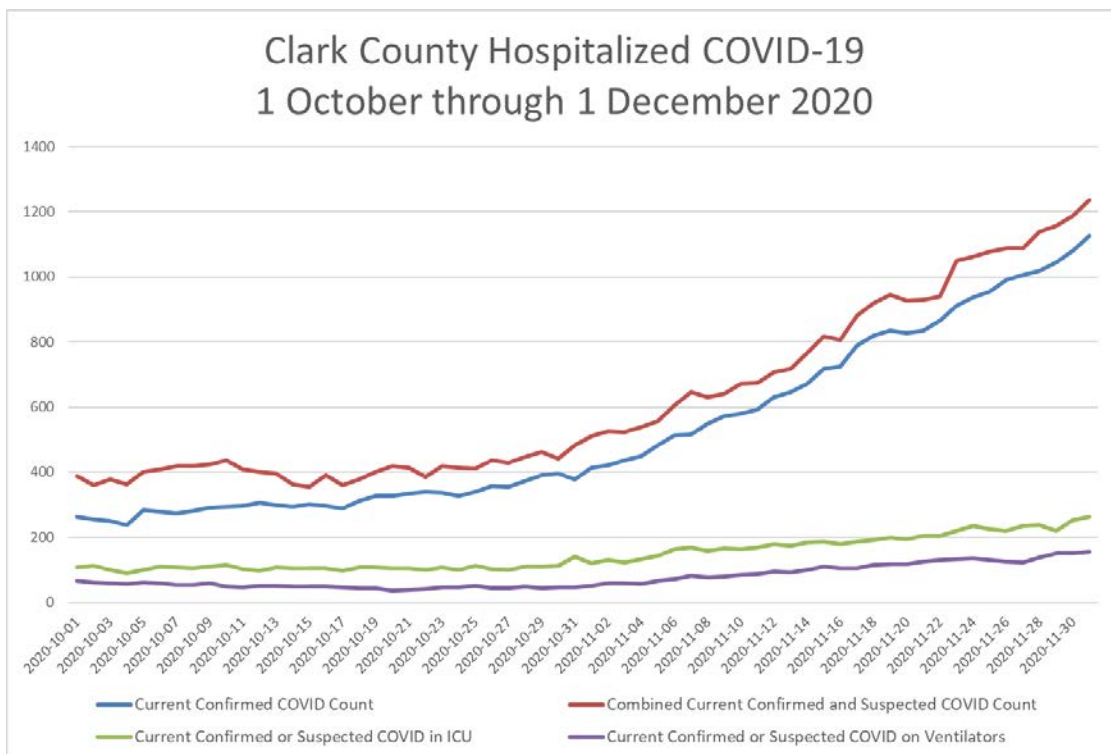
Nevada COVID-19 Hospitalization Experience 1 April through 1 December 2020



Northern Nevada Data Set



Clark County Data Set





COVID-19 Daily Statistics

1 December 2020 Statewide Data Set

Region/ County	# of Licensed Inpatient Beds	# of staffed inpatient beds	Hospital Census	% Licensed Beds Occupied	% Staffed Beds Occupied	# of Licensed (Adult) ICU Beds	How many (ADULT) ICU beds are occupied?	%(Adult) ICU Beds Occupied	Total # of Ventilators	How many ventilators are currently in use?	% Ventilators in Use	CONFIRMED COVID-19 Cases	# SUSPECTED COVID-19 Cases	# confirmed or suspected COVID-19 patients in ICU	# confirmed or suspected COVID-19 patients on a ventilator	Relative demand: confirmed and suspected % total patients	Relative demand: confirmed and suspected in ICU to licensed ICU beds	Relative demand: % ventilators in use confirmed and suspected	Relative demand: confirmed and suspected % total patients to STAFFED beds
North	1725	1448	1329	77%	92%	257	151	59%	219	75	34%	337	21	80	44	27%	31%	20%	25%
Rural	249	265	123	49%	46%	21	15	71%	36	4	11%	50	8	8	3	47%	38%	8%	22%
South	4686	5159	4081	87%	79%	772	548	71%	966	366	38%	1126	110	264	155	30%	34%	16%	24%
Total	6660	6872	5533	83%	81%	1050	714	68%	1221	445	36%	1513	139	352	202	30%	34%	17%	24%
Carson	211	159	154	73%	97%	24	19	79%	22	9	41%	57	4	9	7	40%	38%	32%	38%
Churchill	25	25	29	116%	116%	4	6	150%	5	4	80%	15	0	4	3	52%	100%	60%	60%
Clark	4686	5159	4081	87%	79%	772	548	71%	966	366	38%	1126	110	264	155	30%	34%	16%	24%
Douglas	23	27	22	96%	81%	4	1	25%	4	0	0%	10	0	1	0	45%	25%	0%	37%
Elko	75	75	19	25%	25%	7	6	86%	6	0	0%	11	0	2	0	58%	29%	0%	15%
Humboldt	25	33	15	60%	45%	3	1	33%	5	0	0%	4	0	1	0	27%	33%	0%	12%
Lander	5	5	2	40%	40%	0	0	0%	0	0	0%	0	0	0	0	0%	0%	0%	0%
Lincoln	4	4	3	75%	75%	0	0	0%	4	0	0%	1	0	0	0	33%	0%	0%	25%
Lyon	14	14	1	7%	7%	0	0	0%	0	0	0%	0	0	0	0	0%	0%	0%	0%
Mineral	11	11	7	64%	64%	0	0	0%	2	0	0%	5	5	0	0	143%	0%	0%	91%
Nye	25	25	16	64%	64%	0	0	0%	5	0	0%	3	3	0	0	38%	0%	0%	24%
Pershing	13	17	1	8%	6%	0	0	0%	0	0	0%	0	0	0	0	0%	0%	0%	0%
Washoe	1518	1293	1175	77%	91%	233	132	57%	197	66	34%	280	17	71	37	25%	30%	19%	23%
White Pine	25	25	8	32%	32%	3	1	33%	5	0	0%	1	0	0	0	13%	0%	0%	4%
Totals	6660	6872	5533	83%	81%	1050	714	68%	1221	445	36%	1513	139	352	202	30%	34%	17%	24%