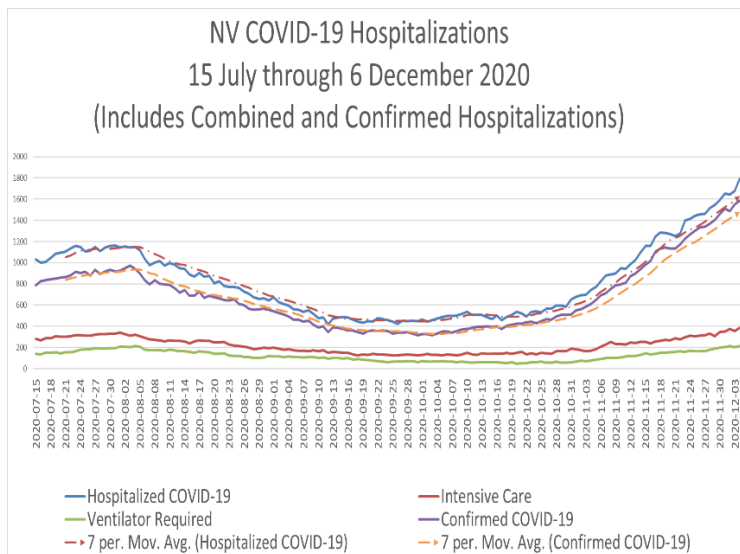
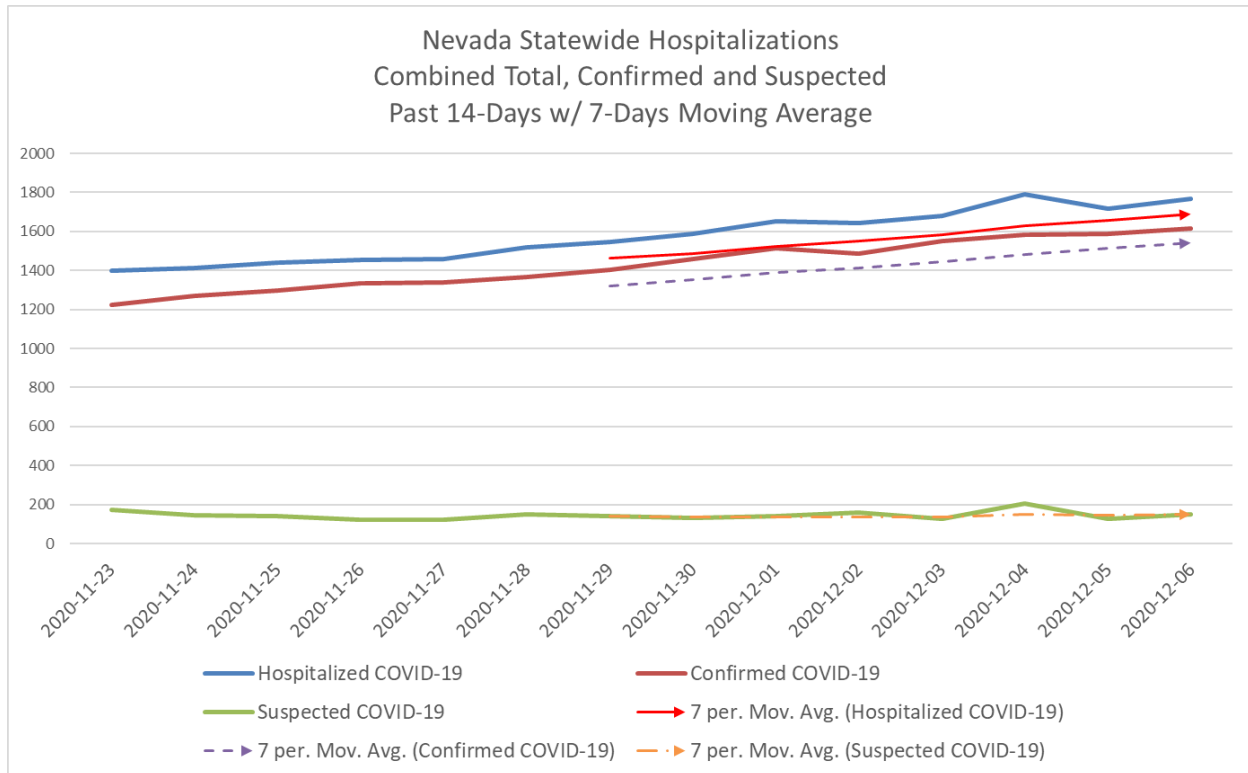


6 December 2020 Statewide Data Set



Nevada continues to be in the midst of an increasing COVID-19 (hospitalization) curve and is experiencing rising numbers of people requiring intensive care and mechanical ventilation.

In the past month (6 Nov. through 6 Dec.) hospitalized patients with COVID-19 have increased more than 230% (692 to 1617) and the need for mechanical ventilation has increased in excess of 250% with cases rising from 89 to 227 during this timeframe.

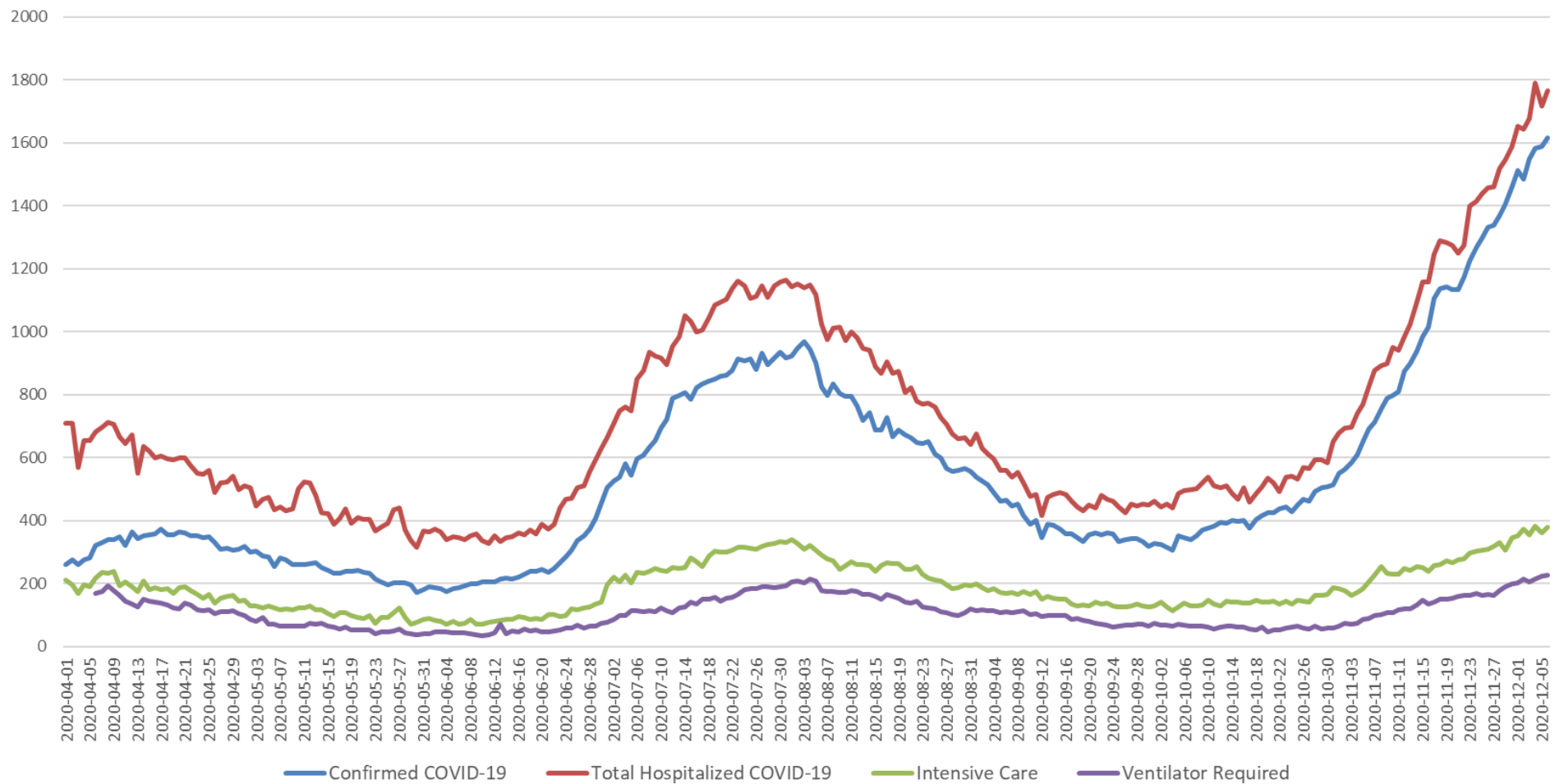
The relative demand being placed on hospitals is now near 32% (% of hospitalized patients with COVID-19) and the Intensive Care burden is near 36% (percent of patients in the ICU with COVID-19).

Unlike earlier increases in the hospitalization curve, hospitals are reporting sufficient levels of personal protective equipment and, access to COVID-19 testing is significantly improved. New therapeutics also are available including antibody infusions and a vaccine should be forthcoming within days to weeks.

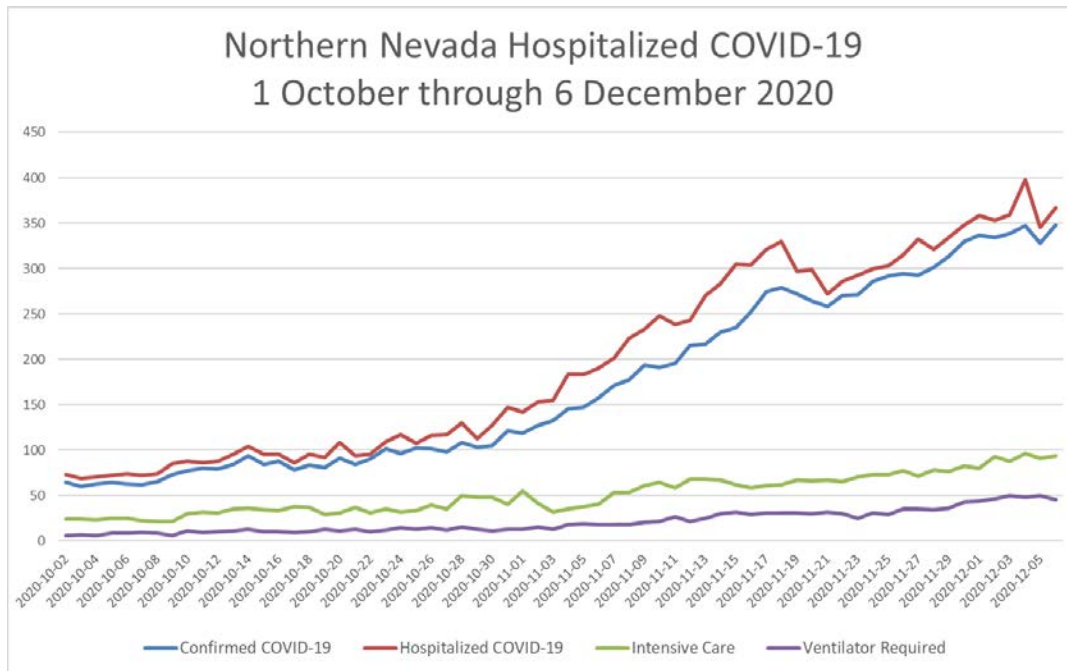


COVID-19 Daily Statistics

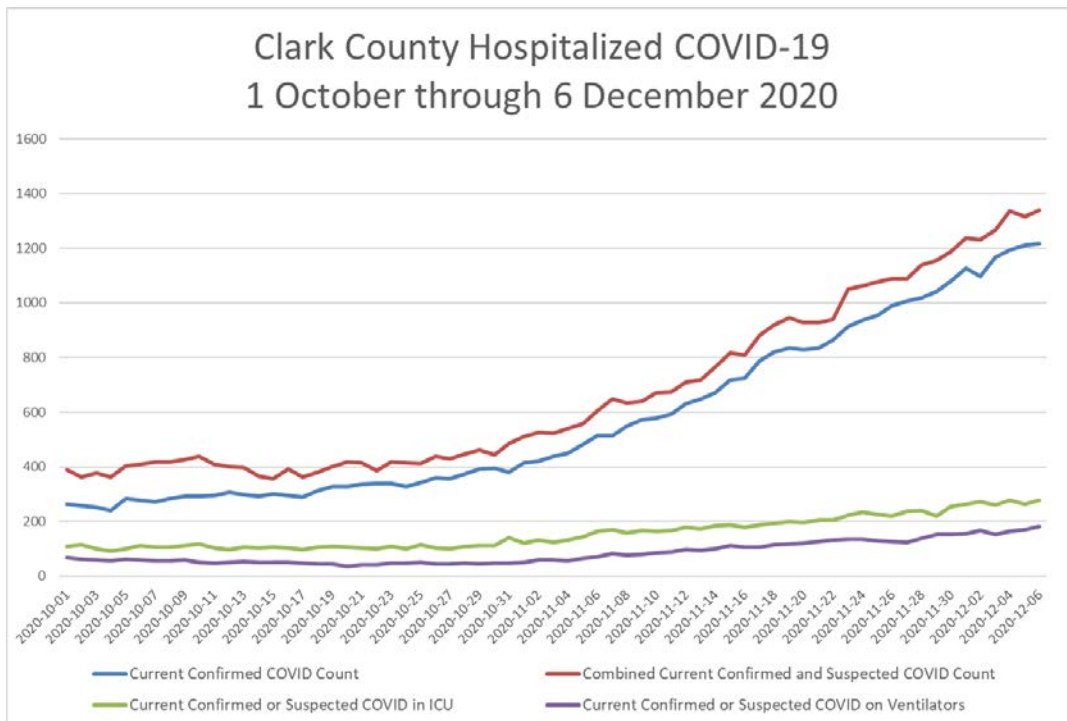
Nevada COVID-19 Hospitalization Experience 1 April through 6 December 2020



Northern Nevada Data Set



Southern Nevada Data Set





COVID-19 Daily Statistics

6 December 2020 Statewide Data Set

Region/ County	# of Licensed Inpatient Beds	# of staffed inpatient beds	Hospital Census	% Licensed Beds Occupied	% Staffed Beds Occupied	# of Licensed (Adult) ICU Beds	How many (ADULT) ICU beds are occupied?	% (Adult) ICU Beds Occupied	Total # of Ventilators	How many ventilators are currently in use?	% Ventilators in Use	CONFIRMED COVID-19 Cases	# SUSPECTED COVID-19 Cases	# confirmed or suspected COVID-19 patients in ICU	# confirmed or suspected COVID-19 patients on a ventilator	Relative demand: confirmed and suspected % total patients	Relative demand: confirmed and suspected in ICU to licensed ICU beds	Relative demand: % ventilators in use confirmed and suspected	Relative demand: confirmed and suspected % total patients to STAFFED beds
North	1725	1448	1293	75%	89%	257	164	64%	194	71	37%	348	19	94	45	28%	37%	23%	25%
Rural	249	263	127	51%	48%	21	20	95%	36	3	8%	52	10	8	2	49%	38%	6%	24%
South	4686	5145	4068	87%	79%	772	578	75%	972	403	41%	1217	121	277	180	33%	36%	19%	26%
Total	6660	6856	5488	82%	80%	1050	762	73%	1202	477	40%	1617	150	379	227	32%	36%	19%	26%
Carson	211	159	155	73%	97%	24	25	104%	22	10	45%	59	6	9	5	42%	38%	23%	41%
Churchill	25	27	30	120%	111%	4	7	175%	5	3	60%	17	0	3	2	57%	75%	40%	63%
Clark	4686	5145	4068	87%	79%	772	578	75%	972	403	41%	1217	121	277	180	33%	36%	19%	26%
Douglas	23	23	17	74%	74%	4	3	75%	4	0	0%	7	0	2	0	41%	50%	0%	30%
Elko	75	75	20	27%	27%	7	7	100%	6	0	0%	10	0	0	0	50%	0%	0%	13%
Humboldt	25	33	11	44%	33%	3	3	100%	5	0	0%	5	0	3	0	45%	100%	0%	15%
Lander	5	5	2	40%	40%	0	0	0%	0	0	0%	0	0	0	0	0%	0%	0%	0%
Lincoln	4	4	6	150%	150%	0	0	0%	4	0	0%	1	0	0	0	17%	0%	0%	25%
Lyon	14	14	2	14%	14%	0	0	0%	0	0	0%	0	0	0	0	0%	0%	0%	0%
Mineral	11	11	6	55%	55%	0	0	0%	2	0	0%	6	0	0	0	100%	0%	0%	55%
Nye	25	25	24	96%	96%	0	0	0%	5	0	0%	4	8	0	0	50%	0%	0%	48%
Pershing	13	17	2	15%	12%	0	0	0%	0	0	0%	1	2	0	0	150%	0%	0%	18%
Washoe	1518	1293	1138	75%	88%	233	139	60%	172	61	35%	289	13	85	40	27%	36%	23%	23%
White Pine	25	25	7	28%	28%	3	0	0%	5	0	0%	1	0	0	0	14%	0%	0%	4%
Totals	6660	6856	5488	82%	80%	1050	762	73%	1202	477	40%	1617	150	379	227	32%	36%	19%	26%