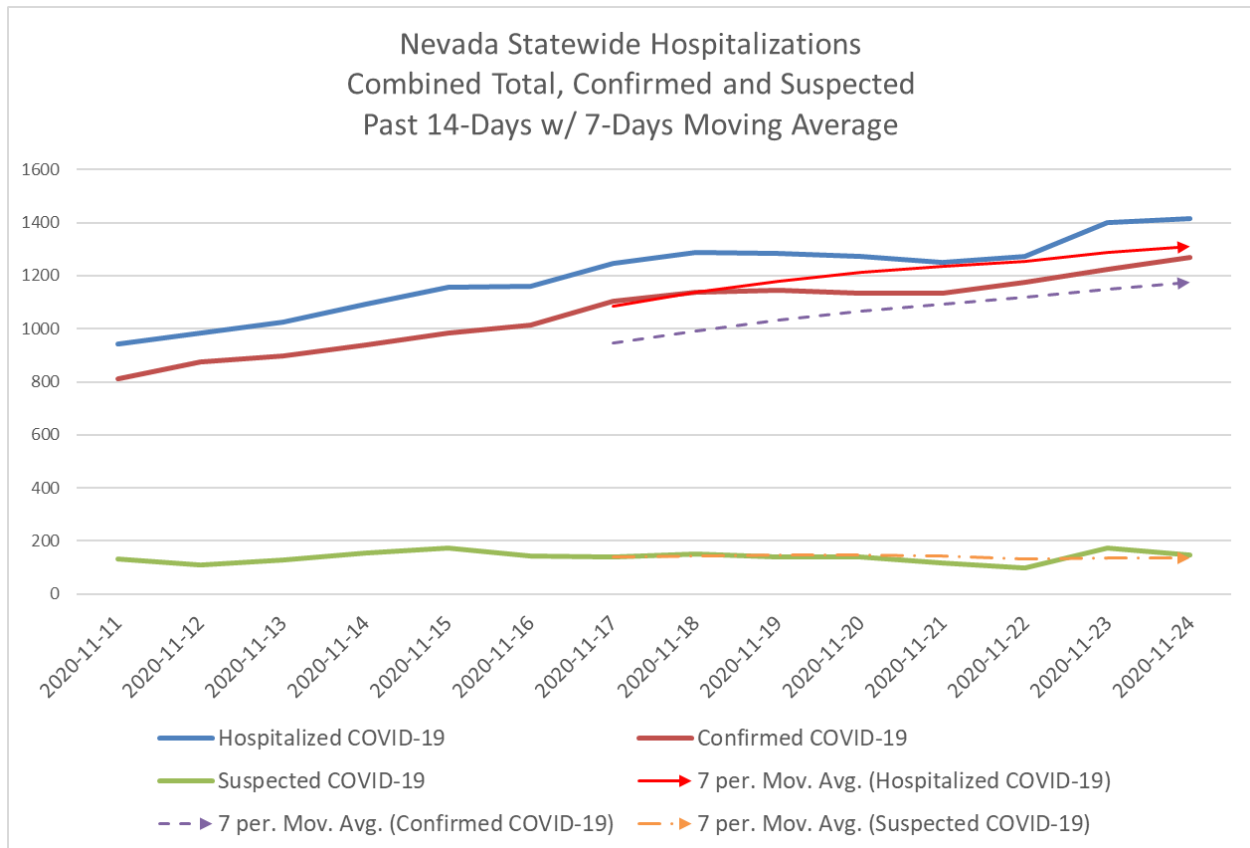


24 November 2020 Statewide Data Set



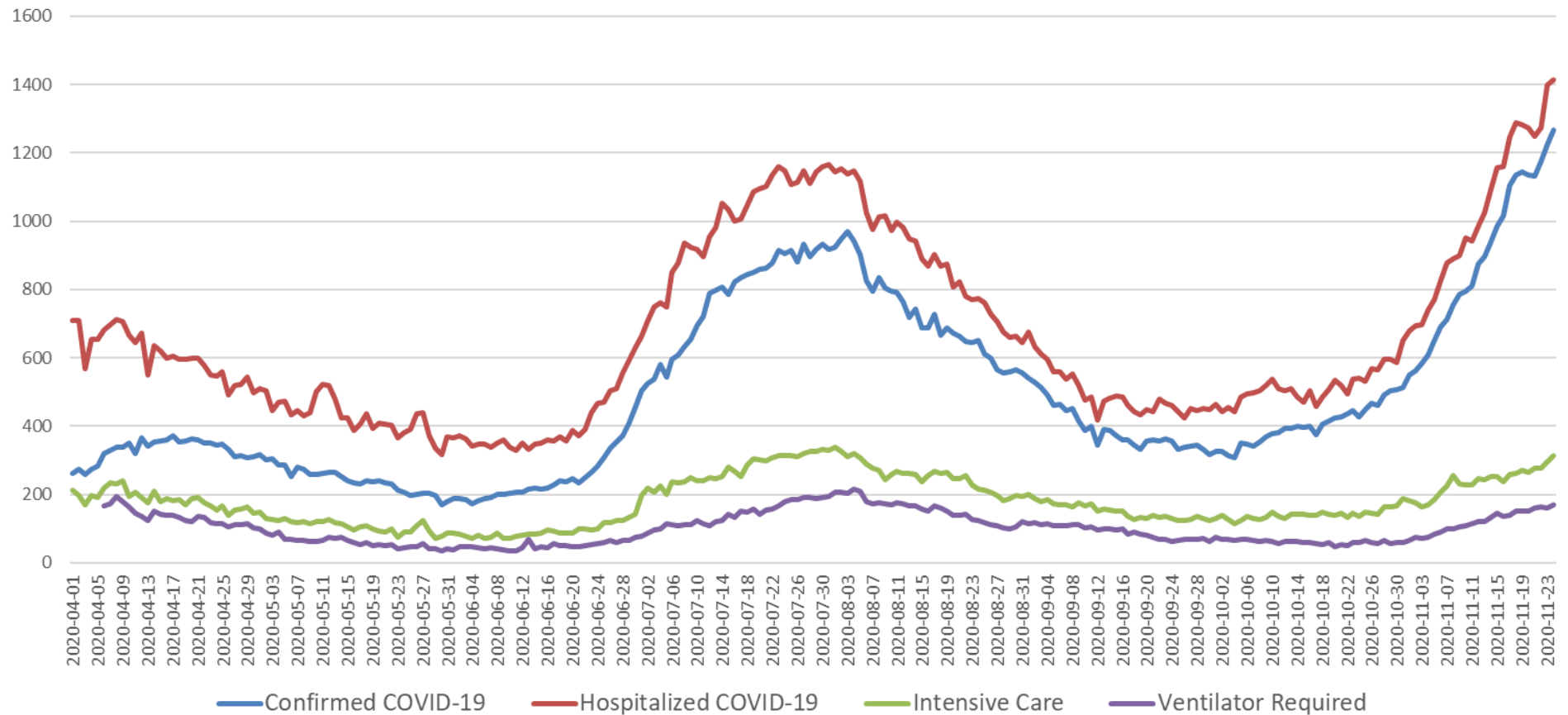
Nevada continues to experience exponential increases in COVID-19 hospitalizations in the metropolitan areas. Currently there are 1,414 people hospitalized with COVID throughout the state. To help readers visualize how many patients this is, image (9) Southwest 737-700s completely full.

The majority of hospitalized COVID-19 patients are adults. Currently, only (7) of the hospitalized patients are pediatrics. There are four kids in the northern region and three in the southern area of the state.

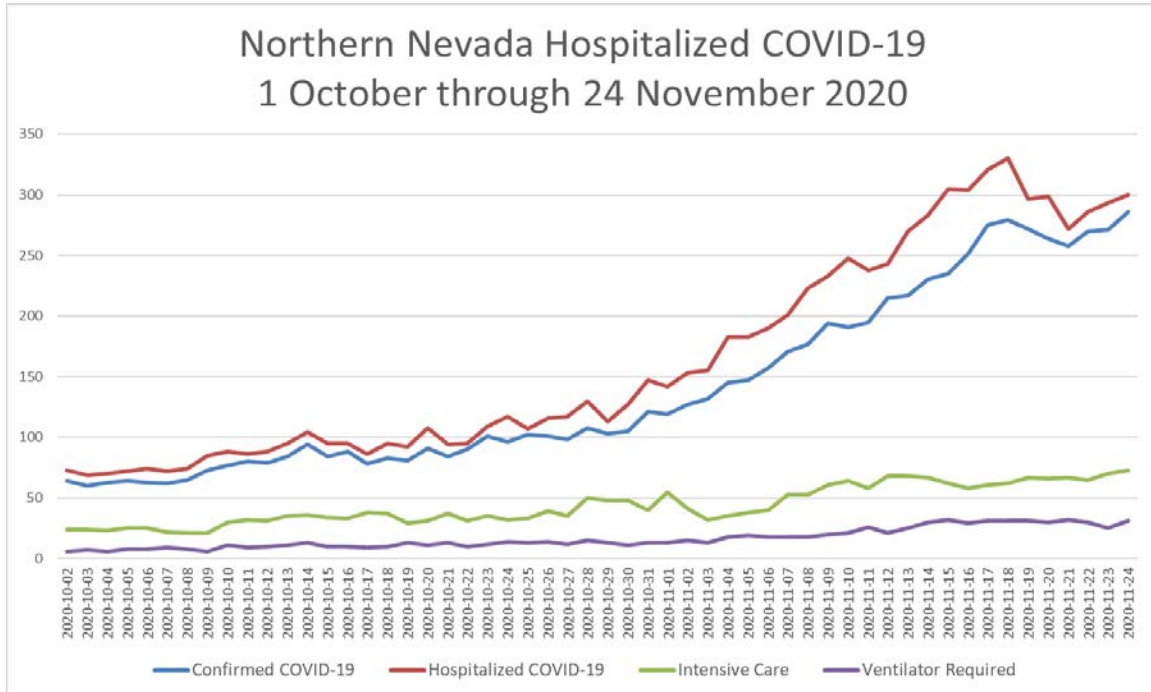
Approximately, 15-20% of all emergency room visits are now related to COVID-19 chief complaints. Hospitals are now receiving new monoclonal antibody therapeutics that can be administered via an intravenous (IV) route to some of these patients, keeping them from requiring hospitalization.

As reported in our last Health Security Report, “If the current pattern of demand continues, the current wave will peak in the first half of December and will persist through the first half of February.”

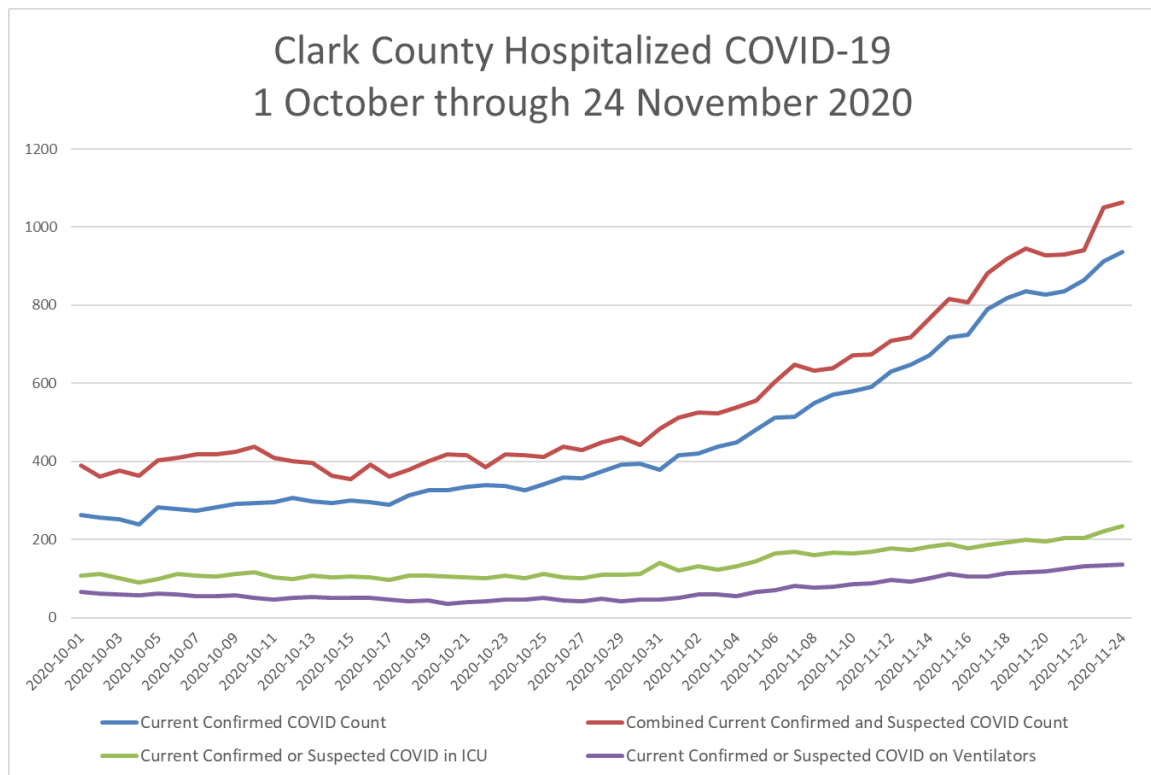
Nevada COVID-19 Hospitalization Experience
1 April through 24 November 2020



Northern Nevada Data Set



Clark County Data Set





COVID-19 Daily Statistics

24 November 2020 Data Set

Region/ County	# of Licensed Inpatient Beds	# of staffed inpatient beds	Hospital Census	% Licensed Beds Occupied	% Staffed Beds Occupied	# of Licensed (Adult) ICU Beds	How many (ADULT) ICU beds are occupied?	%(Adult) ICU Beds Occupied	Total # of Ventilators	How many ventilators are currently in use?	% Ventilators in Use	CONFIRMED COVID-19 Cases	# SUSPECTED COVID-19 Cases	# confirmed or suspected COVID-19 patients in ICU	# confirmed or suspected COVID-19 patients on a ventilator	Relative demand: confirmed and suspected % total patients	Relative demand: confirmed and suspected in ICU to licensed ICU beds	Relative demand: % ventilators in use confirmed and suspected	Relative demand: confirmed and suspected % total patients to STAFFED beds
North	1725	1448	1225	71%	85%	257	159	62%	218	69	32%	286	14	73	31	24%	28%	14%	21%
Rural	249	272	117	47%	43%	21	8	38%	46	4	9%	45	6	5	3	44%	24%	7%	19%
South	4686	5129	4119	88%	80%	772	546	71%	934	356	38%	937	126	234	135	26%	30%	14%	21%
Total	6660	6849	5461	82%	80%	1050	713	68%	1198	429	36%	1268	146	312	169	26%	30%	14%	21%
Carson	211	159	152	72%	96%	24	21	88%	22	9	41%	45	2	10	4	31%	42%	18%	30%
Churchill	25	30	25	100%	83%	4	5	125%	5	3	60%	12	0	3	2	48%	75%	40%	40%
Clark	4686	5129	4119	88%	80%	772	546	71%	934	356	38%	937	126	234	135	26%	30%	14%	21%
Douglas	23	23	17	74%	74%	4	2	50%	4	1	25%	11	0	2	1	65%	50%	25%	48%
Elko	75	75	20	27%	27%	7	1	14%	16	0	0%	11	0	0	0	55%	0%	0%	15%
Humboldt	25	33	16	64%	48%	3	0	0%	5	0	0%	4	0	0	0	25%	0%	0%	12%
Lander	5	5	1	20%	20%	0	0	0%	0	0	0%	0	0	0	0	0%	0%	0%	0%
Lincoln	4	4	2	50%	50%	0	0	0%	4	0	0%	0	0	0	0	0%	0%	0%	0%
Lyon	14	14	0	0%	0%	0	0	0%	0	0	0%	0	0	0	0	0%	0%	0%	0%
Mineral	11	11	8	73%	73%	0	0	0%	2	0	0%	4	0	0	0	50%	0%	0%	36%
Nye	25	25	21	84%	84%	0	0	0%	5	0	0%	3	6	0	0	43%	0%	0%	36%
Pershing	13	17	0	0%	0%	0	0	0%	0	0	0%	0	0	0	0	0%	0%	0%	0%
Washoe	1518	1299	1073	71%	83%	233	138	59%	196	60	31%	241	12	63	27	24%	27%	14%	19%
White Pine	25	25	7	28%	28%	3	0	0%	5	0	0%	0	0	0	0	0%	0%	0%	0%
Totals	6660	6849	5461	82%	80%	1050	713	68%	1198	429	36%	1268	146	312	169	26%	30%	14%	21%